

SCHLAGE SRINX INSTALLATION GUIDE

SRINX READER INTERFACE 2010

IMPORTANT WARNING

INCORRECT WIRING TO THE POWER CONNECTOR (P4) WILL CAUSE SERIOUS DAMAGE TO THE EQUIPMENT.

PLEASE CHECK ALL WIRING CONNECTIONS PRIOR TO TURNING THE SYSTEM ON.

P4 - POWER

SRINX POWER REQUIREMENTS: 14-24VDC
 SRINX CURRENT CONSUMPTION: 120mA MAX WITHOUT A READER CONNECTED
 IF POWERED FROM SRCNX USE P4:
 PIN 4 PWR +
 PIN 3 RXA
 PIN 2 TXB
 PIN 1 GND -
 REC WIRE: 4 COND./18 AWG./TWSTED/SHLD/STRD (UP TO 500 FT)(4,000 FT DATA ONLY)
 IF POWERED LOCALLY USE P4:
 PIN 4 PWR +
 PIN 1 GND -
 REQUIRED POWER SUPPLY - 24VDC RATED, UL294
 POWER LIMITED POWER SUPPLY CAPABLE OF FOUR HOURS OF STANDBY BATTERY POWER IN P4 POWER BOX

P1 - P2 CONTACT INPUTS

P1
 PIN 1 GROUND
 PIN 2 EXIT REQUEST (REX)
 PIN 3 GROUND
 PIN 4 DOOR POSITION SWITCH (DOD)
 P2
 PIN 1 GROUND
 PIN 2 GP1
 PIN 3 GROUND
 PIN 4 GP2

DEVICE TYPE:
 DOD (SUPERVISED)-MAX. DISTANCE 1,000 FT.
 DOD (UNSUPERVISED)-MAX. DISTANCE 2,000 FT.
 REC WIRE: 2 COND./22 AWG./TWSTED/SHLD/STRD

P5 & P6 RELAY OUTPUTS

PIN 1 NORMALLY OPEN
 PIN 2 NORMALLY CLOSED
 PIN 3 COMMON

RELAYS RATED AT 1A @ 30VDC

W2 - P3 PIN 2 CONFIGURATION

W2 DETERMINES THE CONFIGURATION OF THE SECOND PIN (RXAW1) AT P3
 JUMPER ACROSS PINS 1&2: CREDENTIAL D1(OR DATA) (DEFAULT SETTING)
 JUMPER ACROSS PINS 3&4: RS232 RX PIN
 JUMPER ACROSS PINS 5&6: RS485 A PIN

W4 - P3 PIN 1 CONFIGURATION

W4 DETERMINES THE CONFIGURATION OF THE FIRST PIN (TXBWO) AT P3
 JUMPER ACROSS PINS 1&2: RS485 A PIN
 JUMPER ACROSS PINS 3&4: RS232 RX PIN
 JUMPER ACROSS PINS 5&6: CREDENTIAL D0 (OR CLOCK SIGNAL) (DEFAULT SETTING)

W5 - P4 PIN 3 CONFIGURATION

W5 DETERMINES THE CONFIGURATION OF THE THIRD PIN (RXA) AT P4
 JUMPER ACROSS PINS 1&2: RS232 RX PIN
 JUMPER ACROSS PINS 3&4: RS485 A PIN (DEFAULT SETTING)

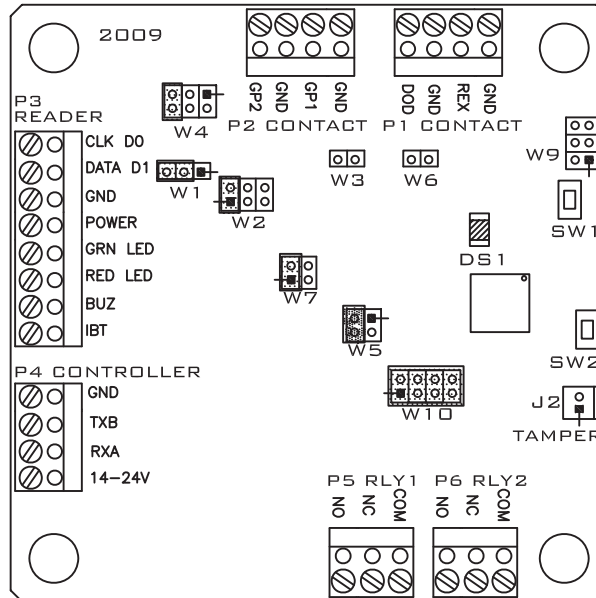
W7 - P4 PIN 2 CONFIGURATION

W7 DETERMINES THE CONFIGURATION OF THE SECOND PIN (TXB) AT P4
 JUMPER ACROSS PINS 1&2: RS485 B PIN (DEFAULT SETTING)
 JUMPER ACROSS PINS 3&4: RS232 TX PIN

DATE OF MANUFACTURE: MONTH _____ YEAR _____
 ASSEMBLY LOCATION: PARSIPPANY, NJ
 ELECTRICAL RATING:
 INPUT: 14-24VDC
 OUTPUT: 5VDC - 12VDC
 MAXIMUM CURRENT DRAW: 120mA MAX WITHOUT A READER

▮ SYMBOL DESIGNATES PIN 1 ON CONNECTOR

-JUMPERS DEPICT THE FACTORY DEFAULT SETTINGS
 -USE A POWER LIMITED UL294 LISTED ACCESS CONTROL POWER SUPPLY
 -ALL INTERCONNECTED DEVICES MUST BE UL LISTED
 -USE ALL UL LISTED AND/OR RECOGNIZED WIRE SUITABLE FOR THE APPLICATION



W10 - SRINX READER INTERFACE ADDRESSING

THE ADDRESS OF THE SRINX IS DEPENDANT ON THE POSITION OF THE JUMPERS ON THESE PINS. PLEASE REFER TO THE ADDRESSING CHART BELOW.

W10 - SRINX READER INTERFACE ADDRESSING

SRCNX ADDR.	JUMPER LOCATIONS	SRCNX-R ADDR.	JUMPER LOCATIONS
1	1 2 4 8	1	1 2 4 8
2	1 2 4 8	2	1 2 4 8
3	1 2 4 8	3	1 2 4 8
4	1 2 4 8	4	1 2 4 8
5	1 2 4 8	5	1 2 4 8
6	1 2 4 8	6	1 2 4 8
7	1 2 4 8	7	1 2 4 8
8	1 2 4 8	8	1 2 4 8
9	2 4 8	1	1 2 4
10	2 4 8	2	1 2 4
11	2 4 8	3	1 2 4
12	2 4 8	4	1 2 4
13	2 4 8	5	1 2 4
14	2 4 8	6	1 2 4
15	2 4 8	7	1 2 4
16	2 4 8	8	1 2 4

W3 - RS485 COMMUNICATION LINE TERMINATOR

W3 IS THE P3 RS485 COMMUNICATION LINE TERMINATOR
 NO JUMPER (DEFAULT SETTING)

W6 - RS485 COMMUNICATION LINE TERMINATOR

W6 IS THE P4 RS485 COMMUNICATION LINE TERMINATOR
 NO JUMPER (DEFAULT SETTING)

SW1 & SW2 - RESET SWITCH

RESET SWITCH CLEARS ALL THE MEMORY ON THE SRINX. DO NOT USE UNLESS INSTRUCTED BY A FACTORY REPRESENTATIVE

DS1 - LED INDICATOR

SLOW BLINK - POWER, NO DATA COMMUNICATION
 FAST BLINK - POWER AND DATA COMMUNICATION

W1 - READ HEAD VOLTAGE SELECTOR

JUMPER ACROSS PINS 2&3 12VDC (DEFAULT)
 JUMPER ACROSS PINS 1&2 5VDC
 NO JUMPER PROVIDES 5VDC
 NOTE: SERIOUS DAMAGE COULD OCCUR IF THIS JUMPER IS INCORRECTLY SET. CHECK THE READ HEAD VOLTAGE REQUIREMENTS.

P3 - READ HEAD CONNECTIONS

PROXIMITY
 MAX. DIST. TO READ HEAD: 500FT.
 CABLE: 5 COND./18 AWG./TWSTED/STRD/SHLD
 SCHLAGE/XCEED-ID READER OUTPUT - AVG-55mA DC PEAK-167mA DC
 PIN 1 (CLK) DATA 0 (GREEN)
 PIN 2 (DAT) DATA 1 (WHITE)
 PIN 3 (GND) GROUND (BLACK)
 PIN 4 (PWR) POWER (RED)
 PIN 5 (GRN) LED (ORANGE)
 PIN 6 (RED) NOT USED
 PIN 7 (BUZ) NOT USED
 PIN 8 (IBT) IBUTTON (NOT USED)

P3 - READ HEAD CONNECTIONS

SMR-5 MAGSTRIPE
 MAX. DIST. TO READ HEAD: 500FT.
 CABLE: 6 COND./18 AWG./TWSTED/STRD/SHLD
 PIN 1 (CLK) DATA 0 (WHITE)
 PIN 2 (DAT) DATA 1 (GREEN)
 PIN 3 (GND) GROUND (BLACK)
 PIN 4 (PWR) POWER (RED)
 PIN 5 (GRN) LED (ORANGE)
 PIN 6 (RED) NOT USED
 PIN 7 (IBT) NOT USED
 DIP SWITCH SETTINGS:
 S1=OFF S2=OFF S3=OFF S4=OFF

SMR-10 MAGSTRIPE
 MAX. DIST. TO READ HEAD: 500FT.
 CABLE: 5 COND./18 AWG./TWSTED/STRD/SHLD
 PIN 1 (CLK) DATA 0 (WHITE)
 PIN 2 (DAT) DATA 1 (GREEN)
 PIN 3 (GND) GROUND (BLACK)
 PIN 4 (PWR) POWER (RED)
 PIN 5 (GRN) LED (BROWN)
 PIN 6 (RED) NOT USED
 PIN 7 (IBT) NOT USED

DIP SWITCH SETTINGS:
 S1=OFF S2=ON S3=ON S4=ON
 NOTE: REMOVE THE TOP MOUNTING BRACKET TO ACCESS THE DIP SWITCHES.

SRINX ENCLOSURE

-THE ENCLOSURE DOOR SHOULD BE SECURED WITH TWO SCREWS IN THE PROVIDED HOLES
 -OPTIONAL TAMPER SWITCH - CONNECT THE TAMPER SWITCH TO CONNECTOR ON J2

MODEL NUMBER: SRINX - SCHLAGE SRINX READER CONTROLLER
 DOCUMENT FORM: SCHLAGE SRINX READER CONTROLLER INSTALLATION GUIDE SRINXIG10-16-09 REV. 1

PRODUCT REFERENCE MATERIAL:
 -FOR PROGRAMMING INSTRUCTIONS PLEASE REFER TO SCHLAGE SMS USER MANUAL SSMH10-16-09 REV. 1
 -FOR HARDWARE INSTRUCTIONS PLEASE REFER TO SCHLAGE SMS INSTALLATION MANUAL SSMH10-16-09 REV. 1

SCHLAGE SIONX-8 INSTALLATION GUIDE

SIONX-8 INPUT-OUTPUT EXPANSION BOARD

IMPORTANT WARNING

INCORRECT WIRING TO THE POWER CONNECTOR (P6 OR P7) WILL CAUSE SERIOUS DAMAGE TO THE EQUIPMENT.

PLEASE CHECK ALL WIRING CONNECTIONS PRIOR TO TURNING THE SYSTEM ON.

P6/P7 - POWER

SIONX-8 POWER REQUIREMENTS: 14-24VDC
 SIONX-8 CURRENT CONSUMPTION: 80mA MAX
 IF POWERED FROM CONTROLLER USE P6:
 SIONX-8 P6 PIN 4 PWR + TO CONTROLLER
 SIONX-8 P6 PIN 1 GND - TO CONTROLLER
 REC WIRE: 2 COND./18 AWG./TWSTED/SHLD/STRD (UP TO 500 FT)
 IF POWERED LOCALLY USE P7:
 REQUIRED POWER SUPPLY - 24VDC RATED,UL294 POWER LIMITED POWER SUPPLY CAPABLE OF FOUR HOURS OF STANDBY BATTERY POWER IN P7 POWER BOX

P6 - DATA CONNECTION

SIONX-8 TO CONTROLLER: RS-485 PROTOCOL
 SIONX-8 P6 PIN 3 (A) TO CONTROLLER
 SIONX-8 P6 PIN 2 (B) TO CONTROLLER
 REC WIRE: 2 COND./18 AWG./TWSTED/SHLD/STRD (UP TO 4,000 FT)

P1 - P4 CONTACT INPUTS

PIN 1 GROUND
 PIN 2 CONTACT INPUT #
 PIN 3 GROUND
 PIN 4 CONTACT INPUT #

DEVICE TYPE:
 DOD (SUPERVISED)-MAX. DISTANCE 1,000 FT.
 DOD (UNSUPERVISED)-MAX. DISTANCE 2,000 FT.
 REC WIRE: 2 COND./22 AWG./TWSTED/SHLD/STRD

P8 - P15 RELAY OUTPUTS

PIN 1 NORMALLY OPEN
 PIN 2 NORMALLY CLOSED
 PIN 3 COMMON

RELAYS RATED AT 1A @ 30VDC

SIONX-8 ENCLOSURE

-THE ENCLOSURE DOOR SHOULD BE SECURED WITH TWO SCREWS IN THE PROVIDED HOLES
 -OPTIONAL TAMPER SWITCH - CONNECT THE TAMPER SWITCH TO CONNECTOR ON J2

DEFAULT PIN & JUMPER SETTINGS

W1 - RS485 COMMUNICATION LINE TERMINATOR
 NO JUMPER (DEFAULT)
 W2 - BKDG (NOT USED) NO JUMPER (DEFAULT)
 W3 - I/O EXPANSION ADDRESSING
 SEE ADDRESSING CHART

SW1 & SW2 - RESET SWITCH

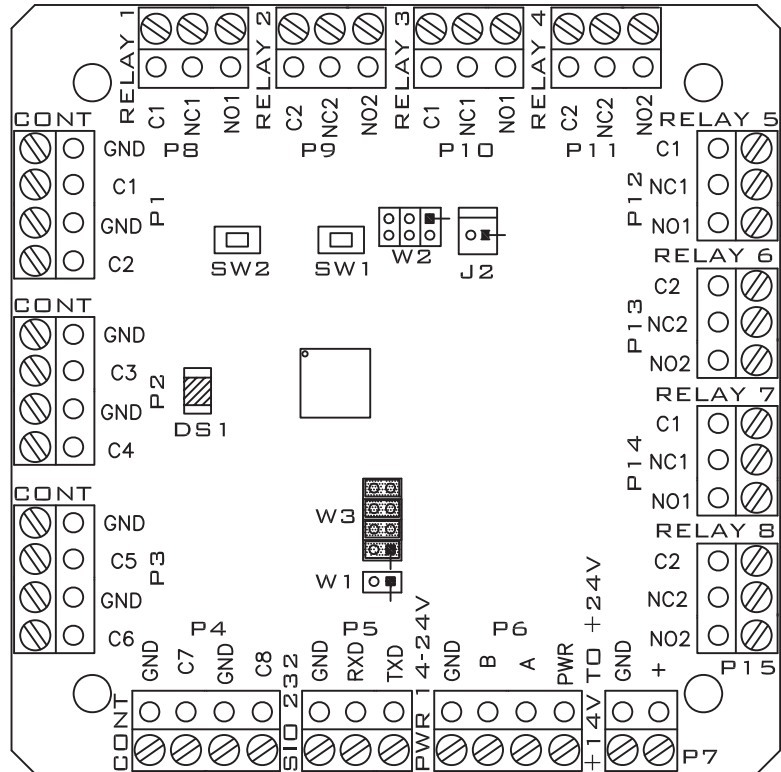
RESET SWITCH CLEARS ALL THE MEMORY ON THE SIONX-8. DO NOT USE UNLESS INSTRUCTED BY A FACTORY REPRESENTATIVE

DS1 - LED INDICATOR

SLOW BLINK - POWER, NO DATA COMMUNICATION
 FAST BLINK - POWER AND DATA COMMUNICATION

↑ SYMBOL DESIGNATES PIN 1 ON CONNECTOR

-JUMPERS DEPICT THE FACTORY DEFAULT SETTINGS
 -USE A POWER LIMITED UL294 LISTED ACCESS CONTROL POWER SUPPLY
 -ALL INTERCONNECTED DEVICES MUST BE UL LISTED
 -USE ALL UL LISTED AND/OR RECOGNIZED WIRE SUITABLE FOR THE APPLICATION



W3 - SIONX-8 I/O EXPANSION ADDRESSING CHART

SIONX-8 ADDR. A	JUMPER LOCATIONS	SIONX-8 ADDR. B	JUMPER LOCATIONS
1	1248	2	248
1	1248	3	1 48
1	1248	4	48
1	1248	5	12 8
1	1248	6	2 8
1	1248	7	1 8
1	1248	8	8
2	248	9	124
2	248	10	24
2	248	11	1 4
2	248	12	4
2	248	13	12
2	248	14	2
2	248	15	1
2	248	16	NO JUMPER

- CONTACT INPUT # 1 _____
- CONTACT INPUT # 2 _____
- CONTACT INPUT # 3 _____
- CONTACT INPUT # 4 _____
- CONTACT INPUT # 5 _____
- CONTACT INPUT # 6 _____
- CONTACT INPUT # 7 _____
- CONTACT INPUT # 8 _____
- RELAY OUTPUT # 1 _____
- RELAY OUTPUT # 2 _____
- RELAY OUTPUT # 3 _____
- RELAY OUTPUT # 4 _____
- RELAY OUTPUT # 5 _____
- RELAY OUTPUT # 6 _____
- RELAY OUTPUT # 7 _____
- RELAY OUTPUT # 8 _____

DATE OF MANUFACTURE: MONTH _____ YEAR _____
 ASSEMBLY LOCATION: PARSIPPANY, NJ
 ELECTRICAL RATING:
 INPUT: 14-24VDC
 OUTPUT: 8 - 1A@30VDC
 MAXIMUM CURRENT DRAW: 80mA MAX

MODEL NUMBER: SIONX-8 - SCHLAGE INPUT-OUTPUT EXPANSION BOARD
 DOCUMENT FORM: SCHLAGE SIONX-8 INSTALLATION GUIDE SIONX-8IG10/16/09 REV. 1

PRODUCT REFERENCE MATERIAL:
 -FOR PROGRAMMING INSTRUCTIONS PLEASE REFER TO SCHLAGE SMS USER MANUAL SSM5HM10/16/09 REV. 1
 -FOR HARDWARE INSTRUCTIONS PLEASE REFER TO SCHLAGE SMS INSTALLATION MANUAL SSM5HM10/16/09 REV. 1

